



## PROJECTS



# GILBERT ROAD

TITLE

## LIGHT RAIL EXTENSION

TYPE



**FACT SHEET** / Summer 2019  
valleymetro.org/gilbertroad

### DESCRIPTION

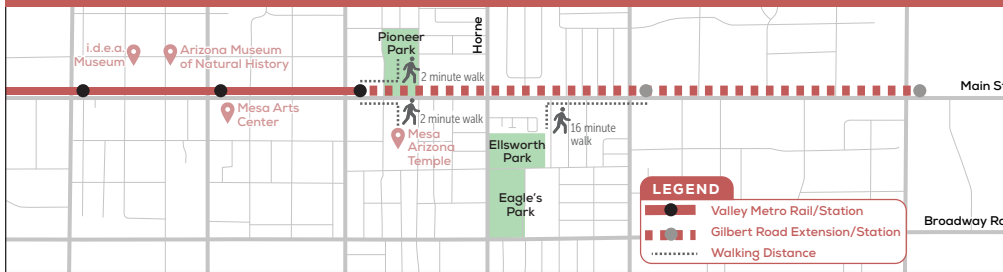
The Gilbert Road Light Rail Extension brings light rail on Main Street from Mesa Drive to Gilbert Road in Mesa. At Gilbert Road, there are significant transit connections and the ability to serve the growing transit demand in the East Valley. This extension will attract new riders and increase development opportunities in central Mesa.

### BUSINESS ASSISTANCE

Prior to and during construction, Valley Metro encouraged businesses to join the Shop On program. Valley Metro promoted the program on the project website, social media sites, a train wrap, weekly emails to subscribers and at events.

- 39 Shop On program businesses
- 194 businesses utilized access signage program
- Community events and marketing campaigns throughout construction promoted area businesses

### GILBERT ROAD LIGHT RAIL EXTENSION



### PROJECT OVERVIEW

Number of miles – 1.9

Number of stations – Two stations (Stapley Drive and Gilbert Road)

Park-and-ride – 500 spaces at the southwest corner of Main Street and Gilbert Road

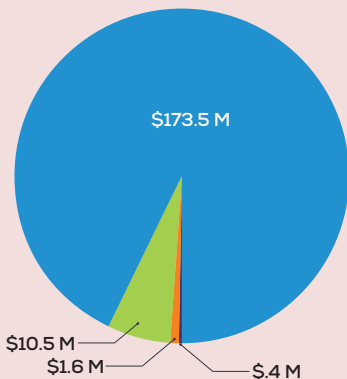
Public art pieces – 5

Construction start – October 2016

Opening – May 18, 2019

### Funding Description Current Budget Percentage

FUNDING TOTAL: \$186 MILLION



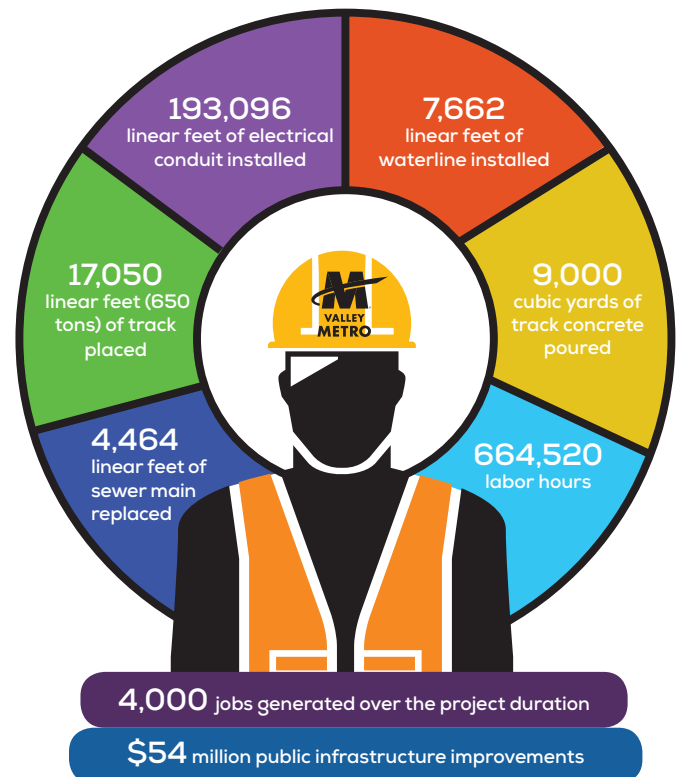
<span style="color: blue;">■</span> <sup>1</sup> Federal STP/CMAQ	93.3%
<span style="color: green;">■</span> City of Mesa Local Match	5.7%
<span style="color: orange;">■</span> <sup>2</sup> Federal UAFF (Transit Center and Operator's Facility)	0.8%
<span style="color: purple;">■</span> Public Transportation Fund (Transit Center and Operator's Facility)	0.2%

\*Note: Budget costs are reflected; the project has not completed final billing.

<sup>1</sup> Federal Surface Transportation Program Congestion Mitigation and Air Quality Improvement (STP/CMAQ)

<sup>2</sup> Federal Urbanized Area Formula Funding (UAFF) (49 U.S.C 5307)

### CONSTRUCTION FACTS



/valleymetro



/valleymetroconstruction

Debra Boehlke  
Business Assistance Program Coordinator  
dboehlke@valleymetro.org  
602.495.8236

Michael Book  
Community Outreach Coordinator  
mbook@valleymetro.org  
602.256.5811

